



SKF MARLIN S-Pro IS

CMDM 5360

ATEX Zone 1 certified Machine Reliability Inspection device

Rugged design and superior performance

The SKF MARLIN S-Pro IS is an exceptionally reliable, rugged mobile computer that is designed to capture your company's mission-critical machinery, inspection and process data. The ATEX Zone 1 certification ensures this product meets your company's stringent safety requirements for use around flammable gasses, vapors, liquids, dusts or fibers. An IP54 sealing rating (electronic enclosure, display and keypad) protects against windblown rain and dust to ensure reliable performance in harsh conditions.

Essential technology for Operator Driven Reliability

SKF was a pioneer in the Operator Driven Reliability (ODR) process, empowering operators to be a proactive resource that contributes to a



company-wide maintenance strategy. Being in close proximity to the machines – 24 hours a day, 7 days a week, operators are often

the first to notice even the smallest changes in machine condition. The MARLIN S-Pro IS is designed to automate the machine inspection process and enable the day-to-day activities of operations personnel as they make their rounds, collecting machine condition, inspection and process data easily and efficiently. Data is quickly trended and when certain conditions are met, the MARLIN system alerts the operator, providing advanced warning of machine deterioration.

Designed with the operator in mind

The MARLIN S-Pro IS is ergonomically designed for all-day use and the high capacity battery provides full-shift power for maximum user productivity. Durable enough to withstand intensive bar code scanning and repeated keyboard use that takes place around the clock in many workplace environments, the MARLIN offers users these additional features:

- The 3.8 inch LED backlit, bright color display allows easy screen viewing in all lighting conditions – from bright to ambient to dark.
- Operator selectable preferences save significant amounts of time by pre-selecting data collection methods as barcode only, smart stud only or both barcode and smart stud.
- Standardized notes can be used to document observed machinery and process conditions then combined with machine data and images to create a variety of reports.
- Built in Wireless LAN (IEEE 802.11b®), Bluetooth™ for future wireless connectivity.
- Intel® XScale™ PXA255 processor at 400 MHz delivers the best possible performance for graphics-rich applications and less power usage.



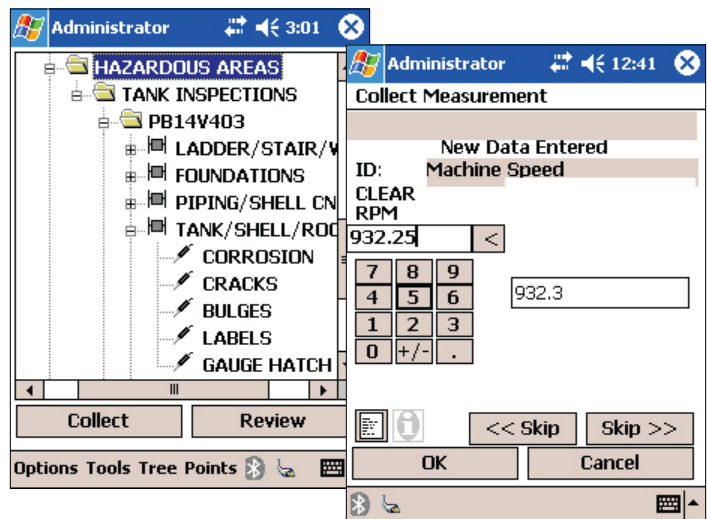
Fast communication of critical data

Sharing your data with other groups within your organization is vital in today's business world. The MARLIN S-Pro IS and SKF @ptitude Inspector software facilitate this data exchange by providing full data import/export capability. Collected data and observations are used to form a wide range of standard or customized management reports. Data plots, machine notes and images can be included with the report, so that a complete machinery and process documentation package can be generated and e-mailed, posted to your company intranet, or imported to a document. When used with SKF Work Notification, work orders that may have previously been ignored are easily generated by machine operators as soon as they identify potential problem conditions.

With its rugged design and ATEX Zone 1 safety rating, the MARLIN S-Pro IS is designed to equip your operations personnel for the toughest conditions. Rounds are easily set up for speed of data collection and critical machine and process data can be communicated enterprise-wide to enable fast responses that keep your production running at optimal speed.

SKF at your service

SKF is at your service to share our competencies in condition monitoring and reliability maintenance services and to address your specific requirements to fully integrate the MARLIN system into your plant-wide program. Our ultimate goal is to help you make the reliability improvements that align with your organization's business objectives.



Specifications

PHYSICAL CHARACTERISTICS

Length: 234 mm (9.2 inches)
Width: 91 mm (3.6 inches)
Height: 43 mm (1.7 inches)
Weight: 616-700 grams (22-25 ounces), configuration-dependent

POWER

Battery type: Removable, rechargeable 7.4 volt Lithium-ion, (2200 mAh)
Battery capacity: 15.8 watt-hours

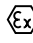
ENVIRONMENTAL

Operating temperature range: -20 °C to +40 °C (-4 °F to +104 °F)
Storage temperature range: -25 °C to +70 °C (-13 °F to +158 °F)
Relative humidity: 5% to 95% (non-condensing)
Drop specification: Multiple drops to concrete 1.8 meters (6 feet)
Environmental sealing: IP54

PERFORMANCE CHARACTERISTICS

Microprocessor: Intel® XScale™ PXA255 processor at 400 MHz
Operating system: Microsoft® Windows embedded CD. NET or Windows Mobile® 2003 with Pocket PC phone edition
Memory (RAM/ROM):
Embedded CE: 32 MB
Expandable: 128 MB
Display: 3.8 inch 1/4 VGA Mono or color

REGULATORY

Electrical safety: Certified to UL60950, CSA C22.2 No. 60950, EN60950/IEC 950
Laser safety: IEC Class2/FDA Class II in accordance with IEC60825-1/EN60825-1
Ex protection type:  II 2 G EEx q [ib] IIC T4
Certificate: PTB 05 ATEX 2055

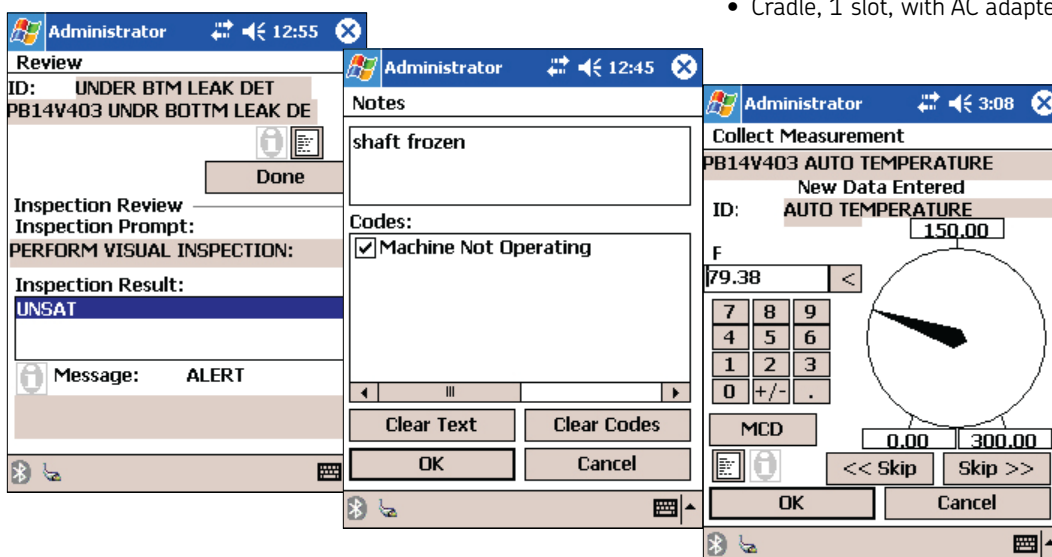
Ordering information

The **MARLIN S-Pro IS CMDM 5360 kit** [CMDM 5360-IS-A-EN] contains:

- MARLIN S-Pro IS CMDM 5360 data manager (MDM)
- MARLIN application
- User manual (CD)
- Communication/recharging dock with extra battery slot
- USB communication cable (dock to PC)
- Serial communication cable (dock to PC)
- Battery: Removable, rechargeable 7.2 volt Lithium ion 2200 mAh, 15.8 watt hours

Optional accessories for non-hazardous environments only

- Machine Condition Detector (MCD Pro IS) kit **CMVL 3600-K-01-C/S-PRO** contains:
 - Machine Condition Detector (MCD Pro IS) with temperature magnet kit
 - Adapter [CMAC 6115]
 - MARLIN S-Pro IS to MCD Pro IS cable [CMAC 6109]
- Machine Condition Detector (MCD Pro IS) kit **CMVL 3600-K-02-C/S-PRO** contains:
 - Machine Condition Detector (MCD Pro IS)
 - Adapter [CMAC 6115]
 - MARLIN S-Pro IS to MCD Pro IS cable [CMAC 6109]
- Cable, MARLIN S-Pro IS to MCD Pro IS (requires adapter CMAC 6115) [CMAC 6109]
- Adapter, MARLIN S-Pro IS to MCD Pro IS cable [CMAC 6115]
- USB communication cable, MARLIN S-Pro IS, dock to PC [CMAC 6104]
- Serial communication cable, MARLIN S-Pro IS, dock to PC [CMAC 6116]
- Battery, MARLIN S-Pro IS [CMAC 6117]
- Cradle, 1 slot, with AC adapter, power cable [CMAC 6110]



Ordering information *(continued)*

MQC (MARLIN QuickConnect) and Mounting

- MQC (MARLIN QuickConnect) – Mechanical M8 x 1.25 mounting thread – three (3) studs per package [CMSS 2600-3]
- MQC (MARLIN QuickConnect) – Mechanical 1/4-28 mounting thread – three (3) studs per package [CMSS 2610-3]
- MQC (MARLIN QuickConnect) – Computerized M8 x 1.25 mounting thread – three (3) studs per package [CMSS 2601-3]
- MQC (MARLIN QuickConnect) – Computerized 1/4-28 mounting thread – three (3) studs per package [CMSS 2611-3]
- Tool kit for spot face 1/4-28 [CMAC 9600-01]
- Tool kit for spot face M8 x 1.25 [CMAC 9600-02]
- Drill bit for 1/4-28 kit [CMAC 9600-03]
- Tap for 1/4-28 kit [CMAC 9600-04]
- Pilot for 1/4-28 kit [CMAC 9600-05]
- Drill bit for M8 x 1.25 kit [CMAC 9600-06]
- Tap for M8 x 1.25 kit [CMAC 9600-07]
- Pilot for M8 x 1.25 kit [CMAC 9600-08]
- End mill or counter bore for either kit [CMAC 9600-09]

International

Each MARLIN S-Pro IS kit is available in the following languages:

- English [CMDM 5360-IS-A-EN]
- German [CMDM 5360-IS-A-DE]
- French [CMDM 5360-IS-A-FR]
- Portuguese [CMDM 5360-IS-A-PO]
- Spanish [CMDM 5360-IS-A-SP]
- Swedish [CMDM 5360-IS-A-SW]

Product Support Plans (PSP)

A range of Product Support Plans are available to protect your investment. Contact your local SKF Reliability Systems Sales Representative for additional information.

For additional information on SKF Reliability Systems products, contact:

SKF Reliability Systems

5271 Viewridge Court • San Diego, California 92123 USA
Telephone: +1 858-496-3400 • FAX: +1 858-496-3531

Web Site: www.skf.com/cm

- © SKF and MARLIN are registered trademarks of the SKF Group.
- Bluetooth is a trademark of Bluetooth SIG, Inc., USA.
- Microsoft, Windows and Windows Mobile are registered trademarks of Microsoft Corporation.
- Intel is a registered trademark and XScale is a trademark of Intel Corporation.
- All other trademarks are the property of their respective owners.

© SKF Group 2007

The contents of this publication are the copyright of the publisher and may not be reproduced (even extracts) unless permission is granted. Every care has been taken to ensure the accuracy of the information contained in this publication but no liability can be accepted for any loss or damage whether direct, indirect or consequential arising out of the use of the information contained herein. SKF reserves the right to alter any part of this publication without prior notice.

SKF Patents include: #US04768380 • #US05679900 • #US05845230 • #US05854553 • #US05992237 • #US06006164 • #US06199422 • #US06202491 • #US06275781 • #US06489884 • #US06513386 • #US06633822 • #US6,789,025 • #US6,792,360 • US 5,633,811 • US 5,870,699 • #WO_03_048714A1

Publication CM2370 EN (7-07) • Printed in the United States of America

